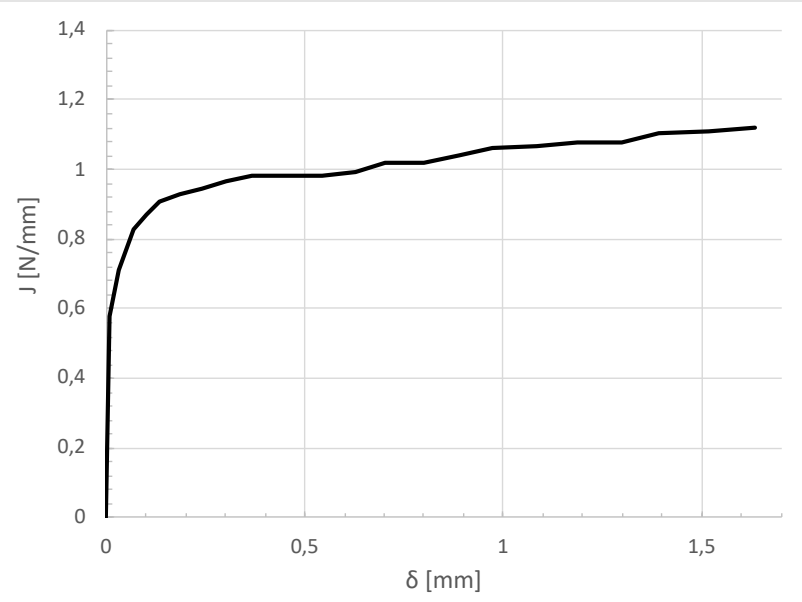
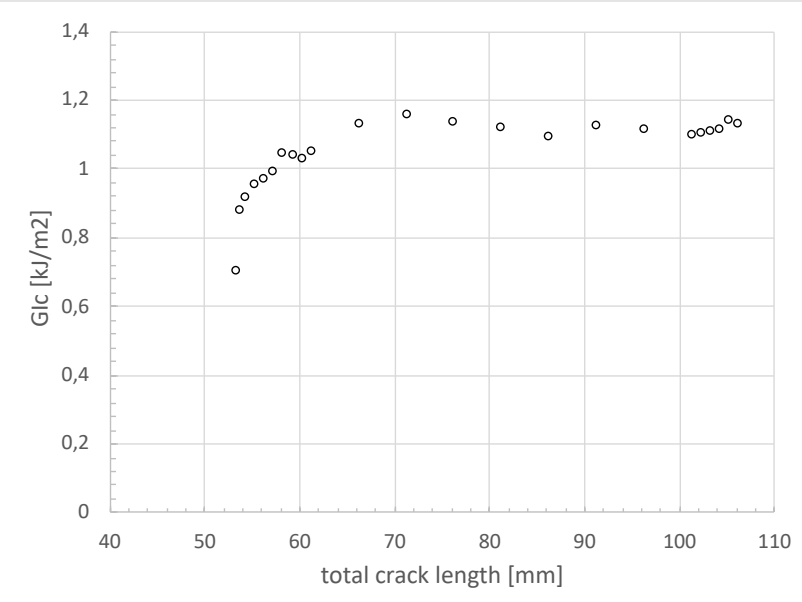
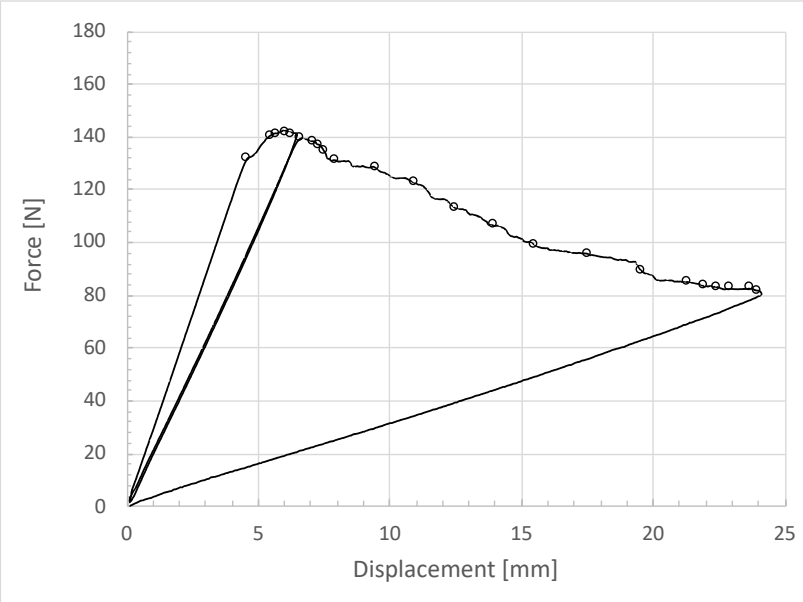
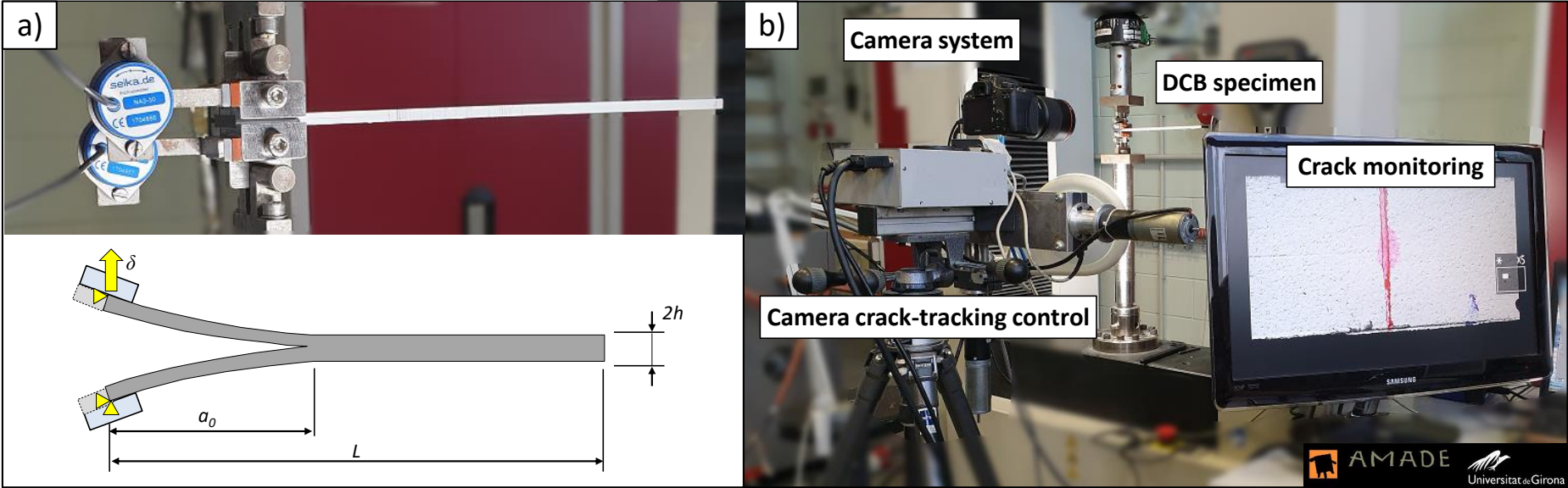


# Can R-curve and Fracture Toughness be considered material properties for Composites?

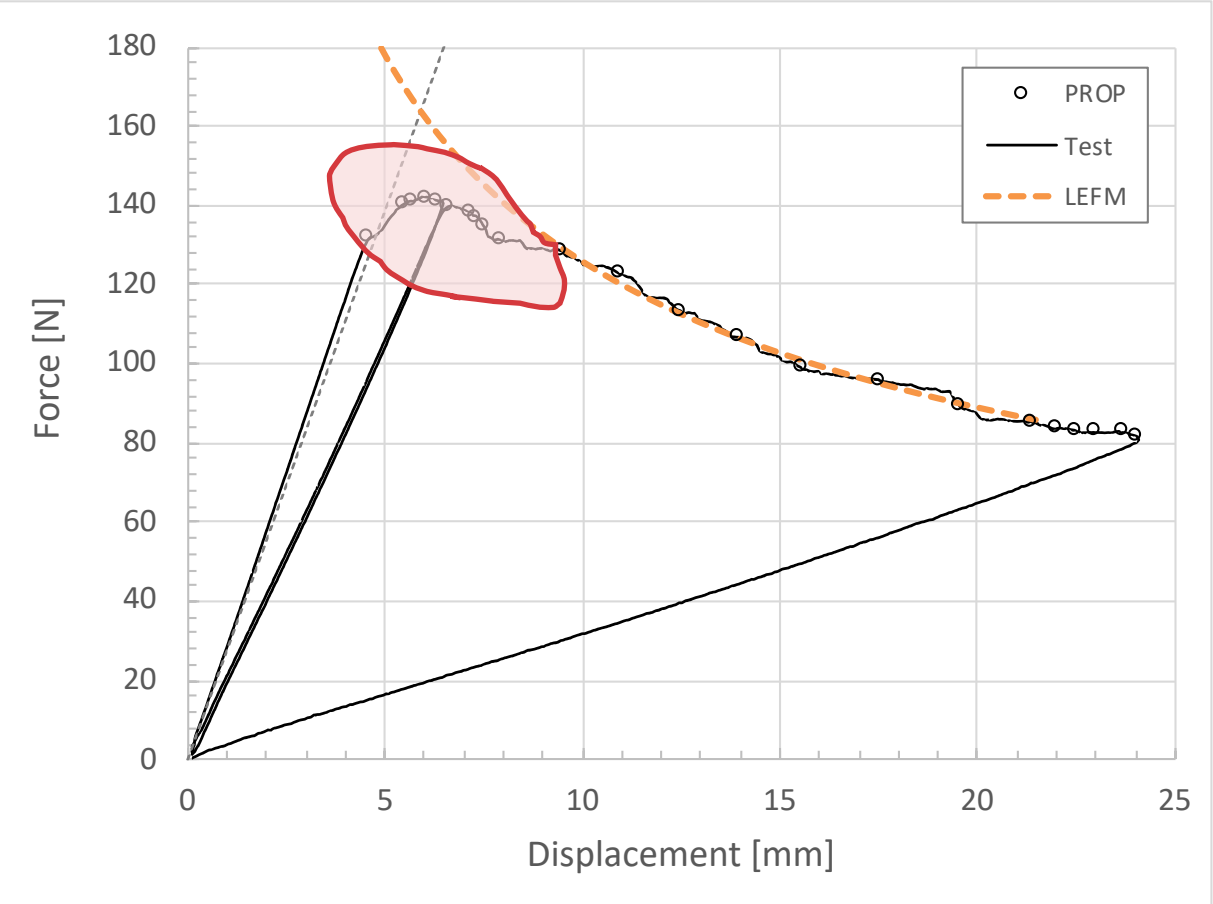
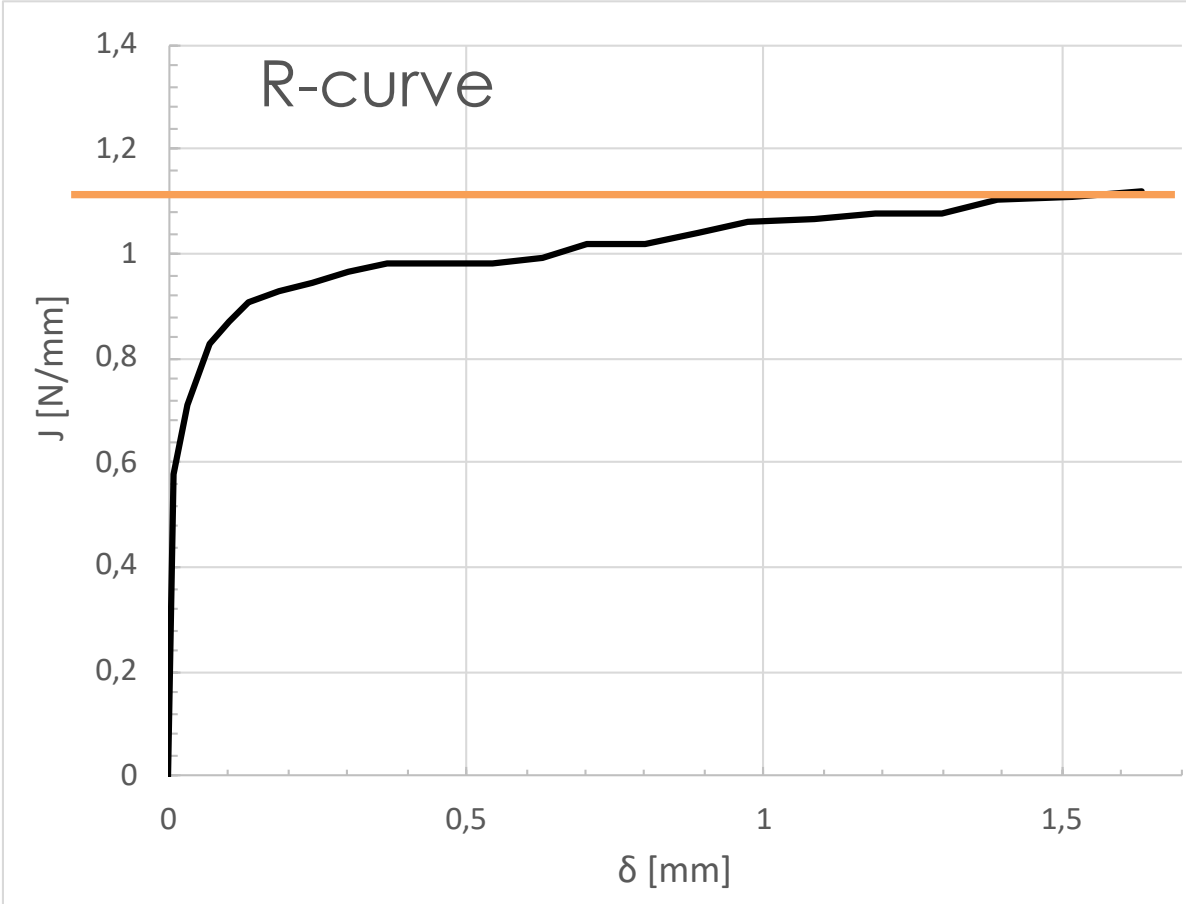
Albert Turon (University of Girona)

14<sup>th</sup> November 2023

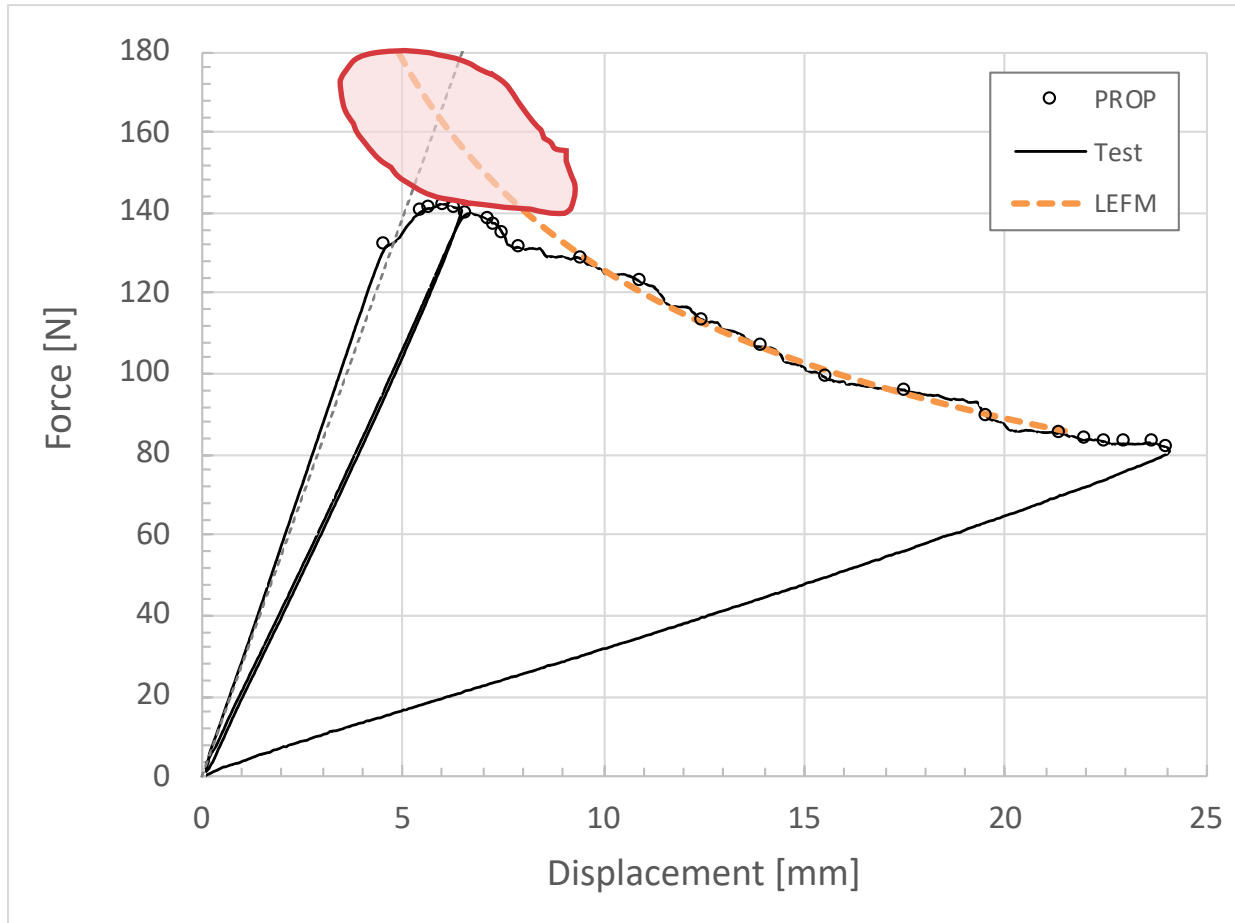
# Mode I experimental test to obtain interface properties



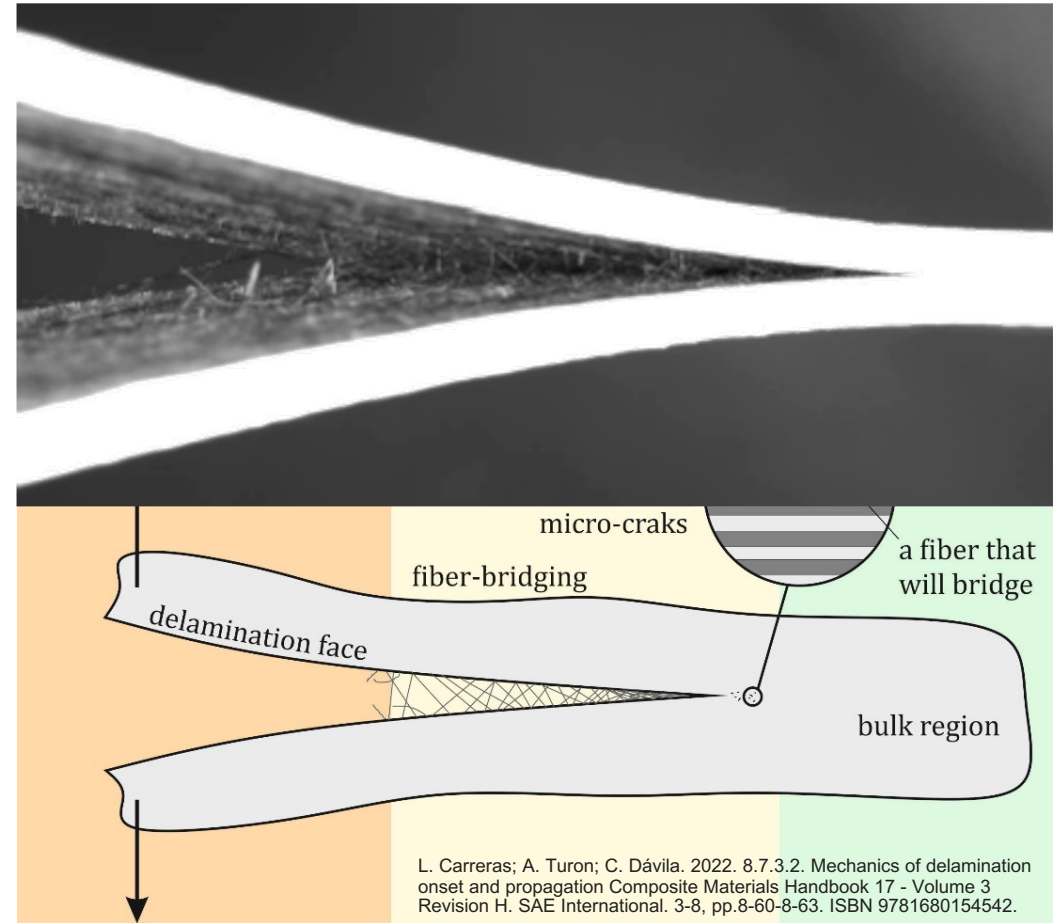
# Mode I experimental test to obtain interface properties



what's going on here?

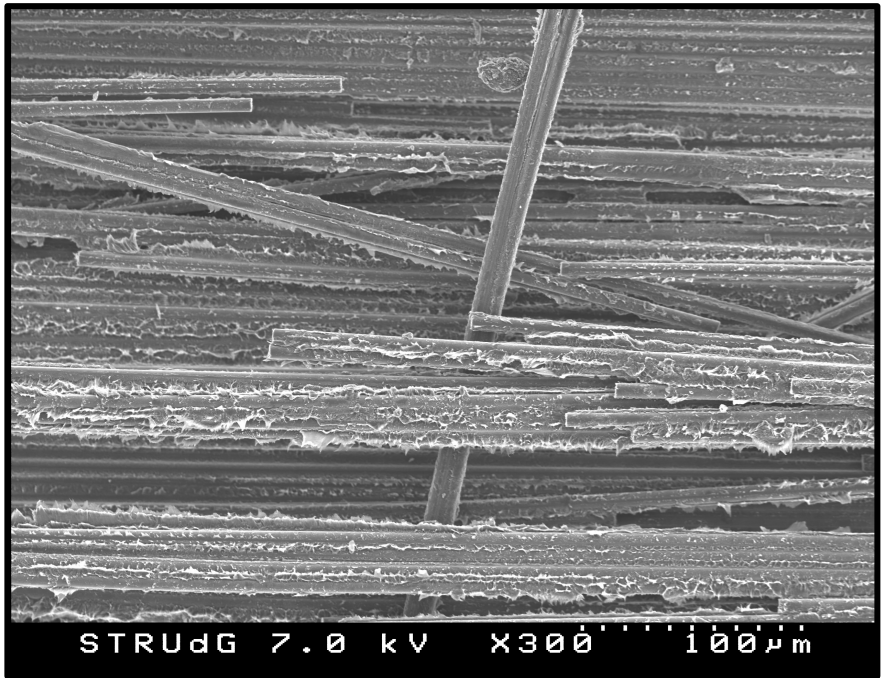
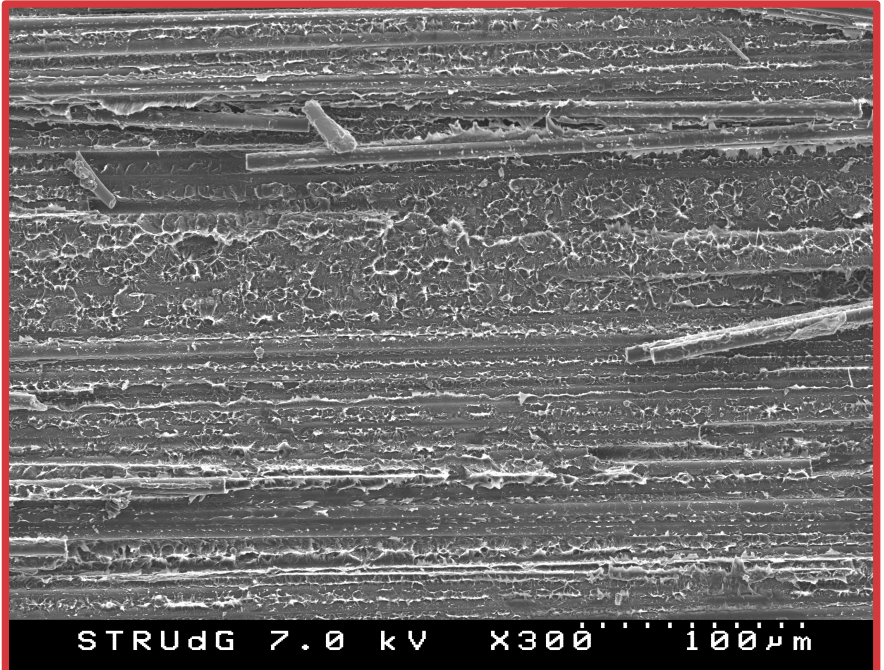
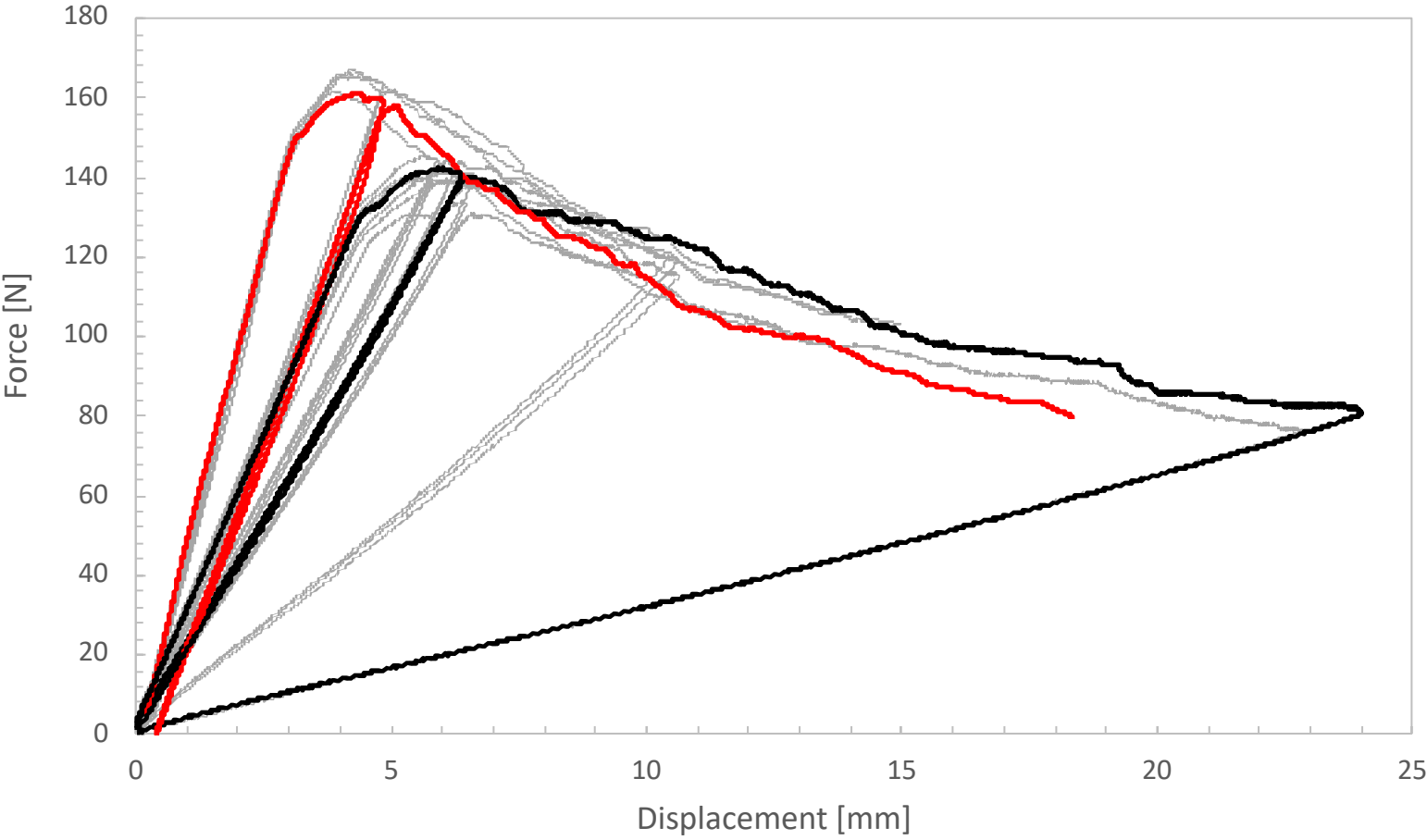


what's going on here?



“...different failure mechanisms developing at the microscale...”

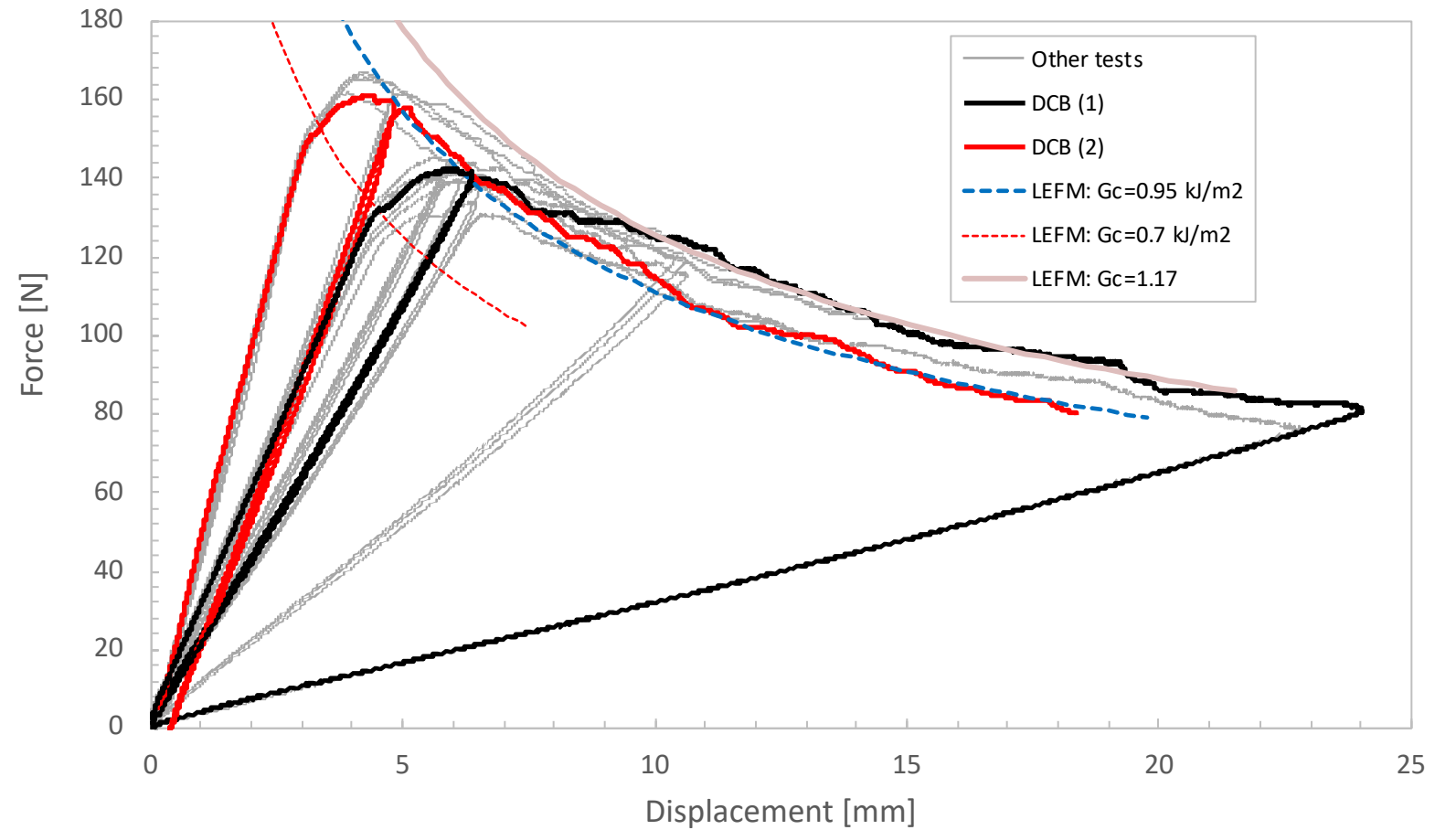
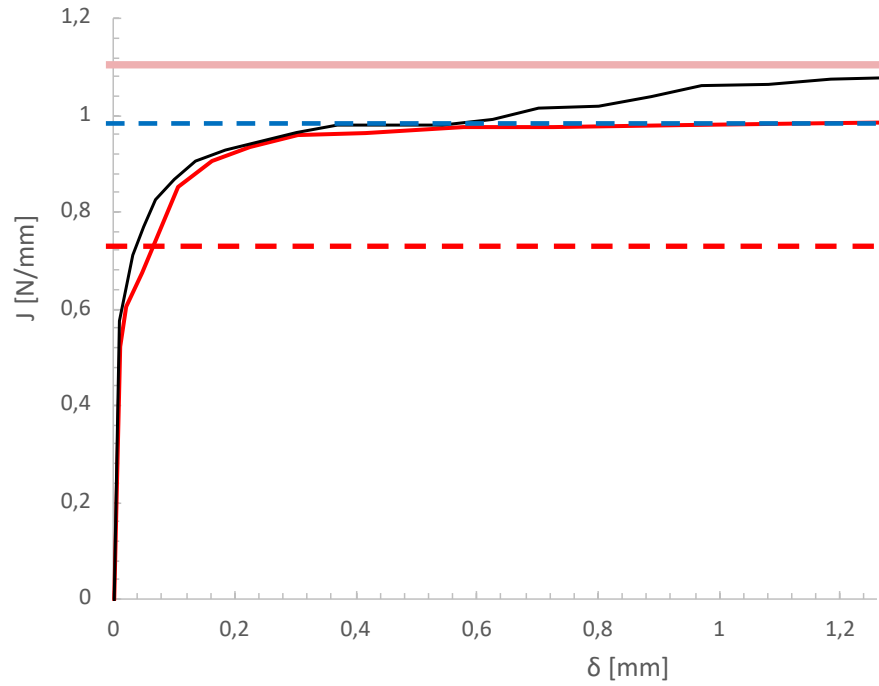
Scatter on the results also show “different behaviour”



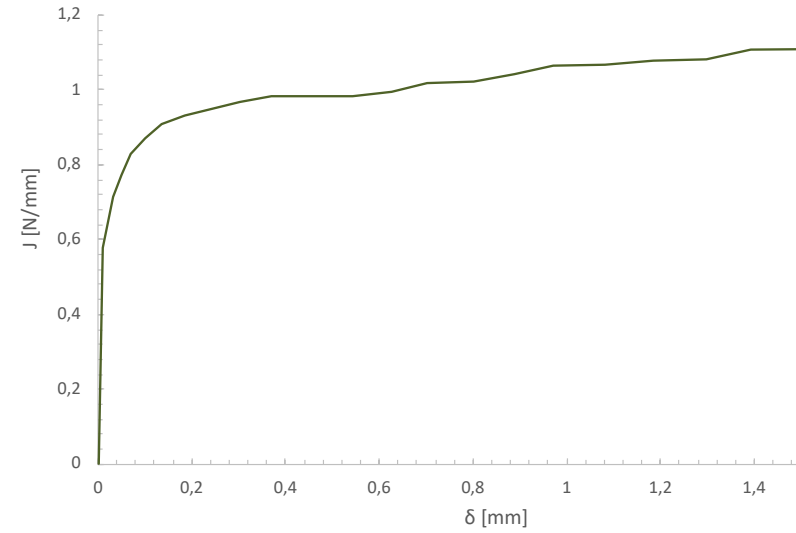
Tijs, B. H. A. H., Abdel-Monsef, S., Renart, J., Turon, A., & Bisagni, C. (2022). Characterization and analysis of the interlaminar behavior of thermoplastic composites considering fiber bridging and R-curve effects. *Composites Part A: Applied Science and Manufacturing*, 162, 107101.



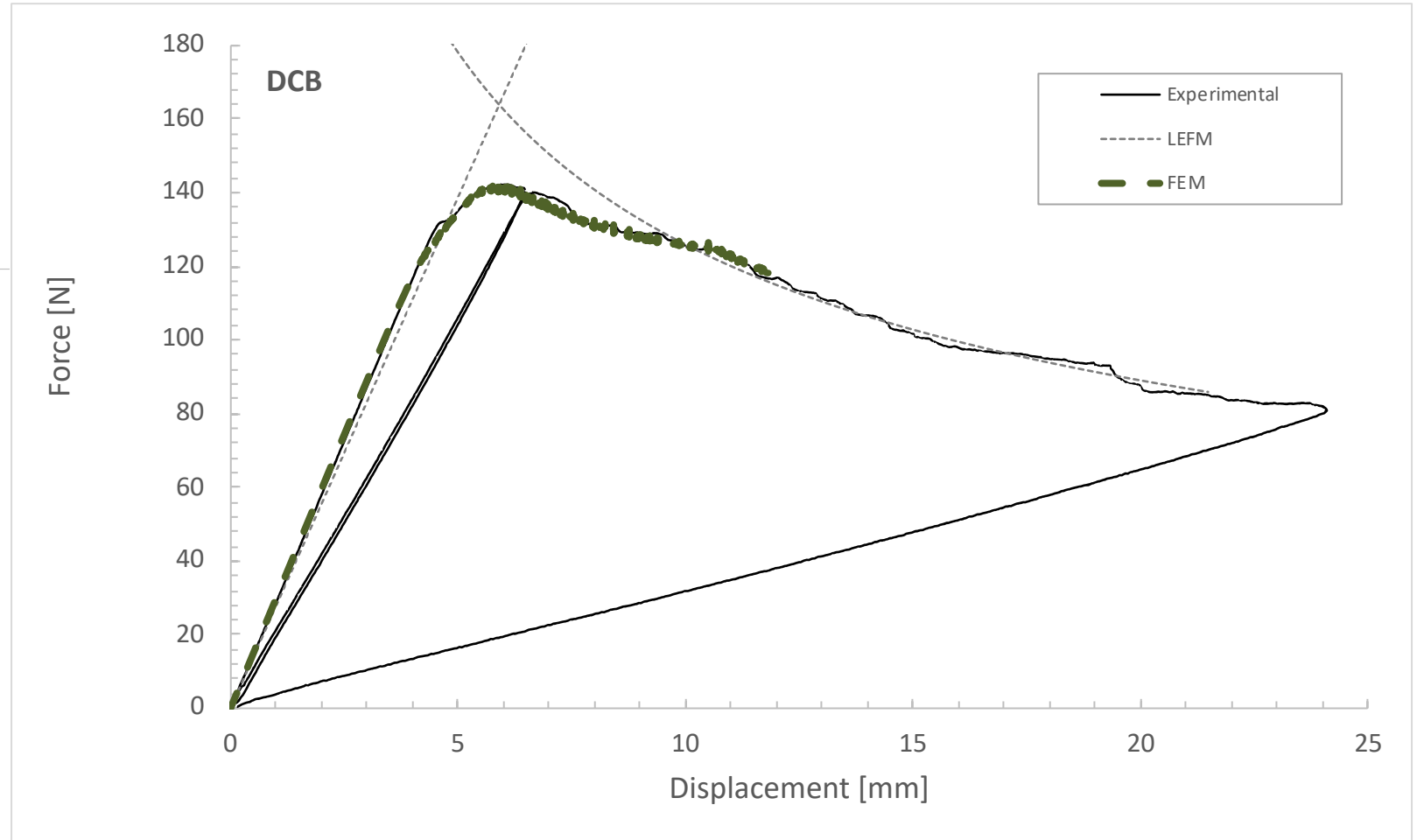
# which toughness? which R-curve?



# which toughness? which R-curve?



>> Cohesive law





<http://amade.udg.edu>

[testlab.amade@udg.edu](mailto:testlab.amade@udg.edu)

